

Duplex & Land Package

House size: 298m²
Land size: 595m²

Ravensfield Estate
FARLEY

Images indicative only and may show upgraded items



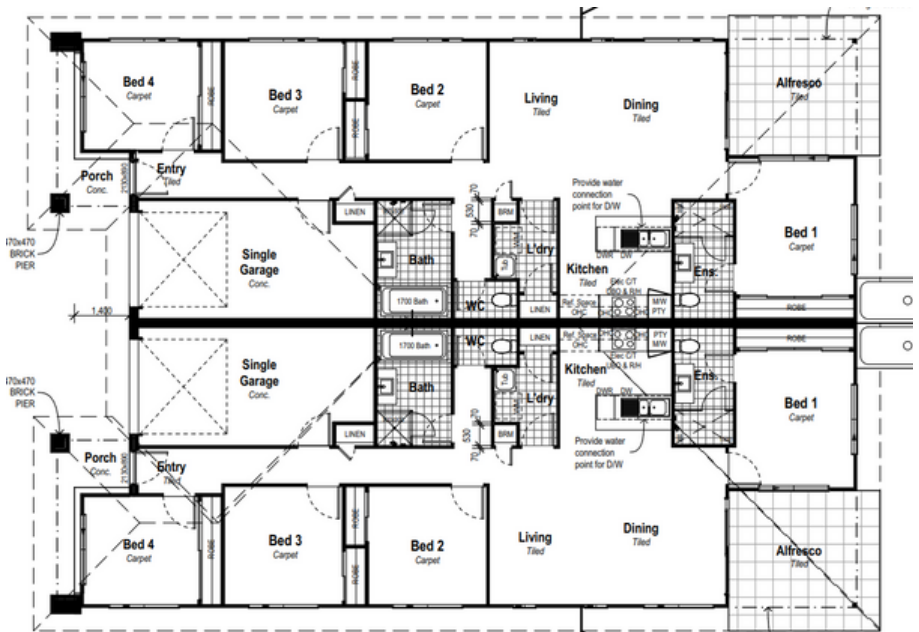
Completely Turnkey

DUPLEX & LAND \$1,149,000

FULL TURN-KEY BUILD
Rental Estimate: \$1,100pw
4 + 4 Bedroom
2 + 2 Bathroom
1 + 1 Garage

LUXURY INCLUSIONS

- Stone kitchen and bathroom benchtops
- Oven, rangehood and cooktop, dishwasher
- Carpet and tiles
- Blinds, downlights, power points, TV aerial
- Alfresco tiled and covered
- Air conditioning
- The fencing, driveway, retaining and all turf is included
- The Turn-key Duplex will be completely finished inside and out



KERRI-ANN HOOPER
0402 107 194
sales@carnelianprojects.com.au

Carnelian
PROJECTS

WORRIED ABOUT BUILDING?

I AM WITH YOU ALL THE WAY THROUGH THE BUILD PROCESS, RIGHT THROUGH TO HANDOVER