

# House (Dual Key)& land package

House size: 212m2

Land size: 500m2

GRETA

Images indicative only and may show upgraded items



## HOUSE & LAND

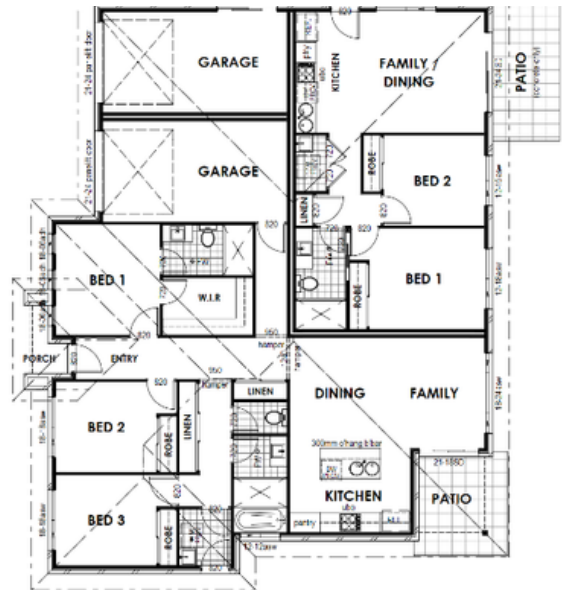
# \$899,000

FULL TURN-KEY BUILD  
Rental Estimate \$900 per week

3 bedroom plus 2 bedroom

### LUXURY INCLUSIONS

- stone kitchen benchtops
- oven, rangehood and cooktop, dishwasher
- carpet and tiles
- blinds, downlights, power points, TV aerial
- the alfresco is tiled and covered
- air conditioning
- the fencing, driveway, retaining and all turf is included
- the home will be completely finished inside and out



KERRI-ANN HOOPER

0402 107 194

sales@carnelianprojects.com.au

# Carnelian PROJECTS

WORRIED ABOUT BUILDING?

I AM WITH YOU ALL THE WAY THROUGH THE BUILD PROCESS, RIGHT THROUGH TO HANDOVER