



4



2



2

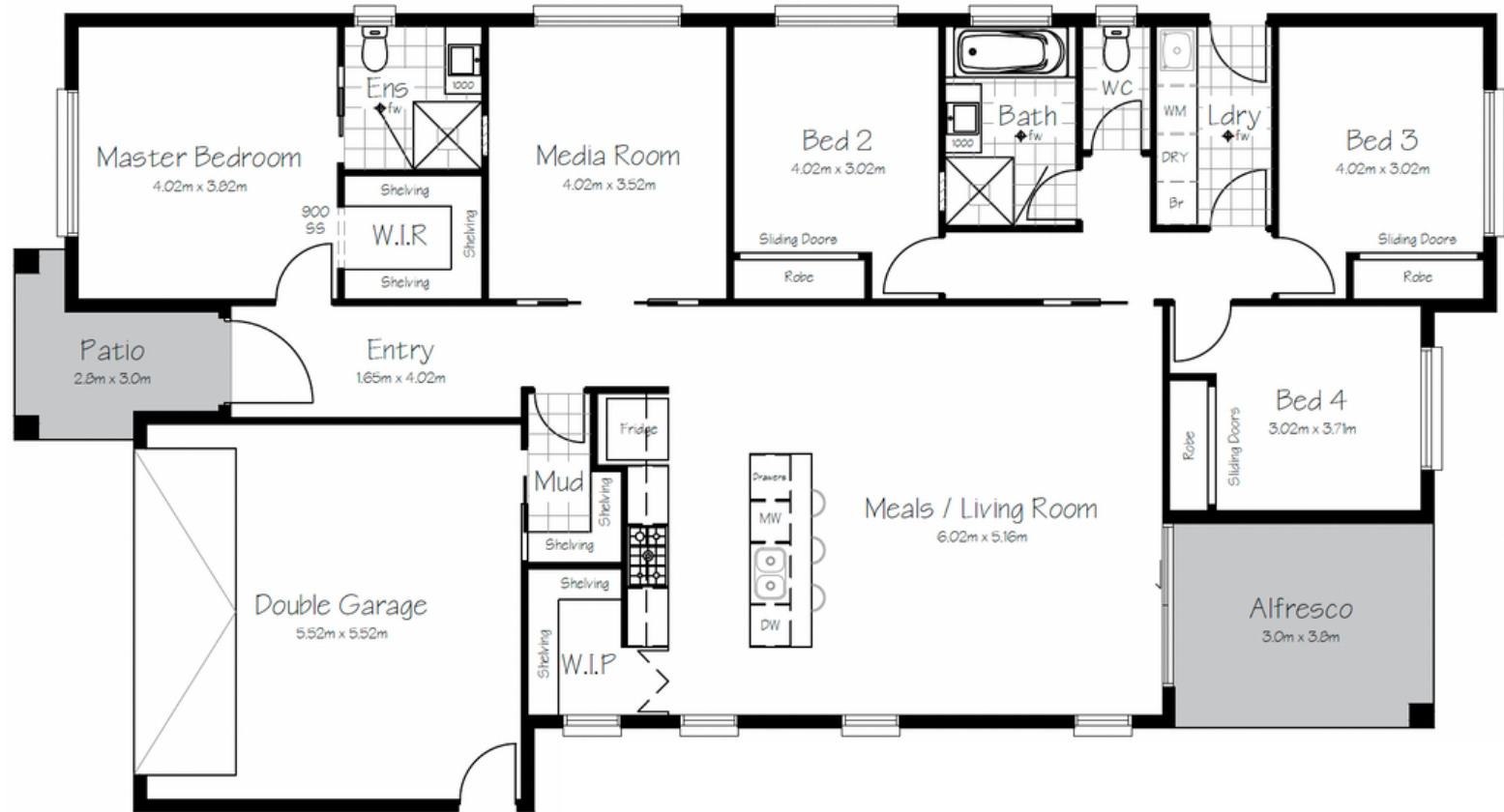
House length - 21.76m
 House width - 11.73m
 Dwelling - 169.7 sqm
 Garage - 32.9 sqm
 Alfresco - 11.4 sqm
 Patio - 5.8 sqm
 Total Build - 219.8 sqm

Final design details and sizing will be determined at final plan drawing stage and is subject to estate and builder requirements.

The Greenport

The Greenport is a wonderful design suited to a standard sized block. The home offers a generous main bedroom with walk in robe and ensuite, plus three other well-proportioned bedrooms with robes. A separate media room with sliding doors keeps noise contained. The kitchen has a substantial island bench with a large walk in pantry, and the functional mudroom is the perfect place for the kids to throw their bags and shoes enabling the rest of the home to remain clean and tidy. The covered alfresco and Hamptons style interiors make this home a beautiful option for the first home buyer.

Optional upgrades are available (please refer to the Inclusions & Upgrades flyer).



All Content Copyrighted.

This design and/or print is the property of Carnelian Projects and Carnelian Homes by Kerri-Ann and is protected by the Commonwealth Copyright Act 1968. It must not be used or reproduced in whole or in part without written permission. Any attempt to copy, use or reproduce the same, in whole or in part, will result in legal proceedings.

carnelianprojects.com.au