



4



2



2

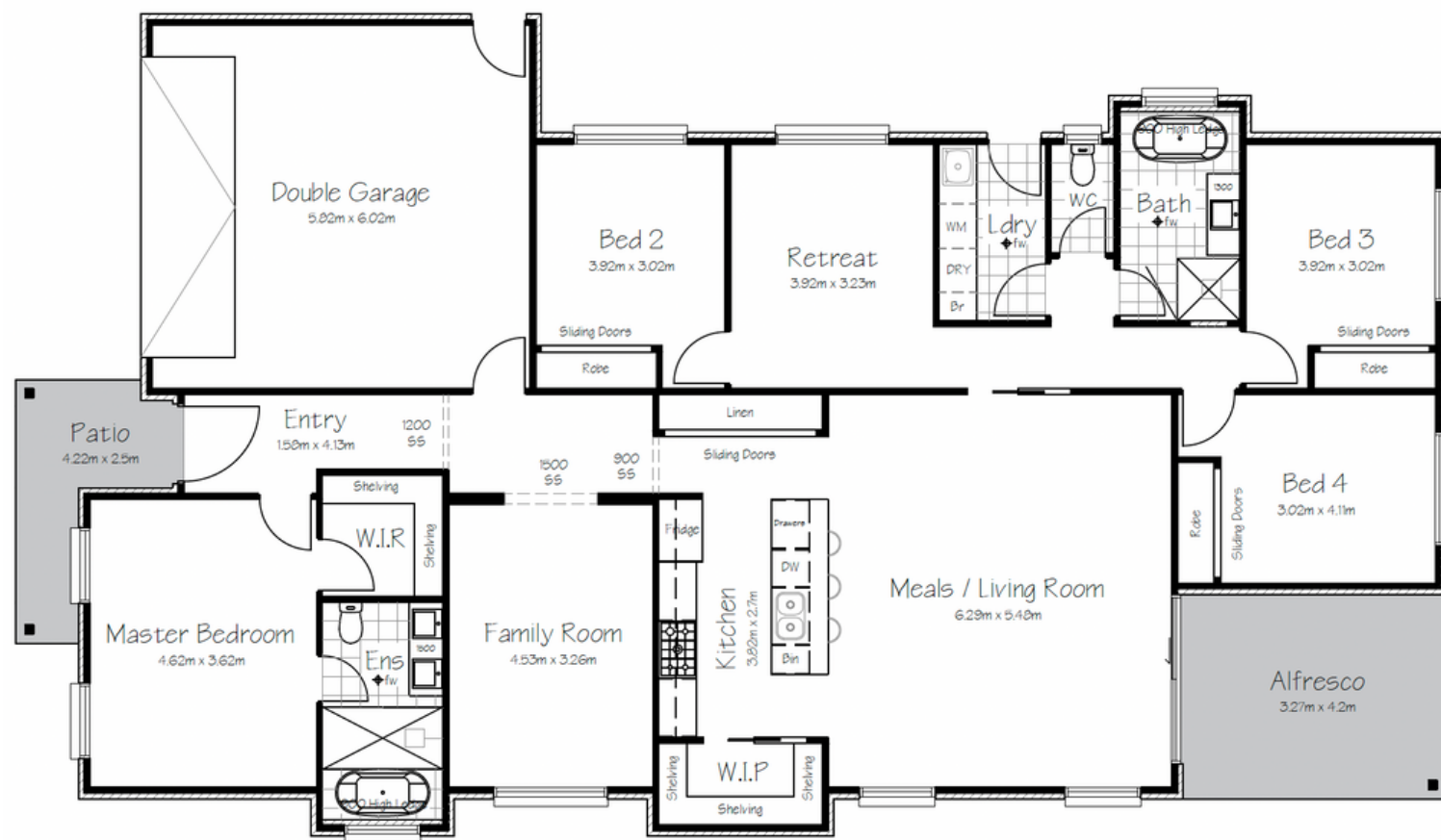
House length - 22.81m
 House width - 13.6m
 Dwelling - 191.4 sqm
 Garage - 37.7 sqm
 Alfresco - 13.7 sqm
 Patio - 6.6 sqm
 Total Build - 249.4 sqm

Final design details and sizing will be determined at final plan drawing stage and is subject to estate and builder requirements.

The Haven

The Haven is the perfect family oasis. With separate areas to suit everyone, this is a home you can grow in to. The design offers plenty of cupboard space and a generous kitchen with convenient walk-in pantry. A beautiful ensuite with a freestanding bath adjoins the comfortable main bedroom, creating a calming space with room to breathe. The independent retreat and family room provide flexibility and allow for multiple entertainment zones. This home has everything you need for relaxed Hamptons style.

Optional upgrades are available (please refer to the Inclusions & Upgrades flyer).



All Content Copyrighted.

This design and/or print is the property of Carnelian Projects and Carnelian Homes by Kerri-Ann and is protected by the Commonwealth Copyright Act 1968. It must not be used or reproduced in whole or in part without written permission. Any attempt to copy, use or reproduce the same, in whole or in part, will result in legal proceedings.

carnelianprojects.com.au