



4



2



2

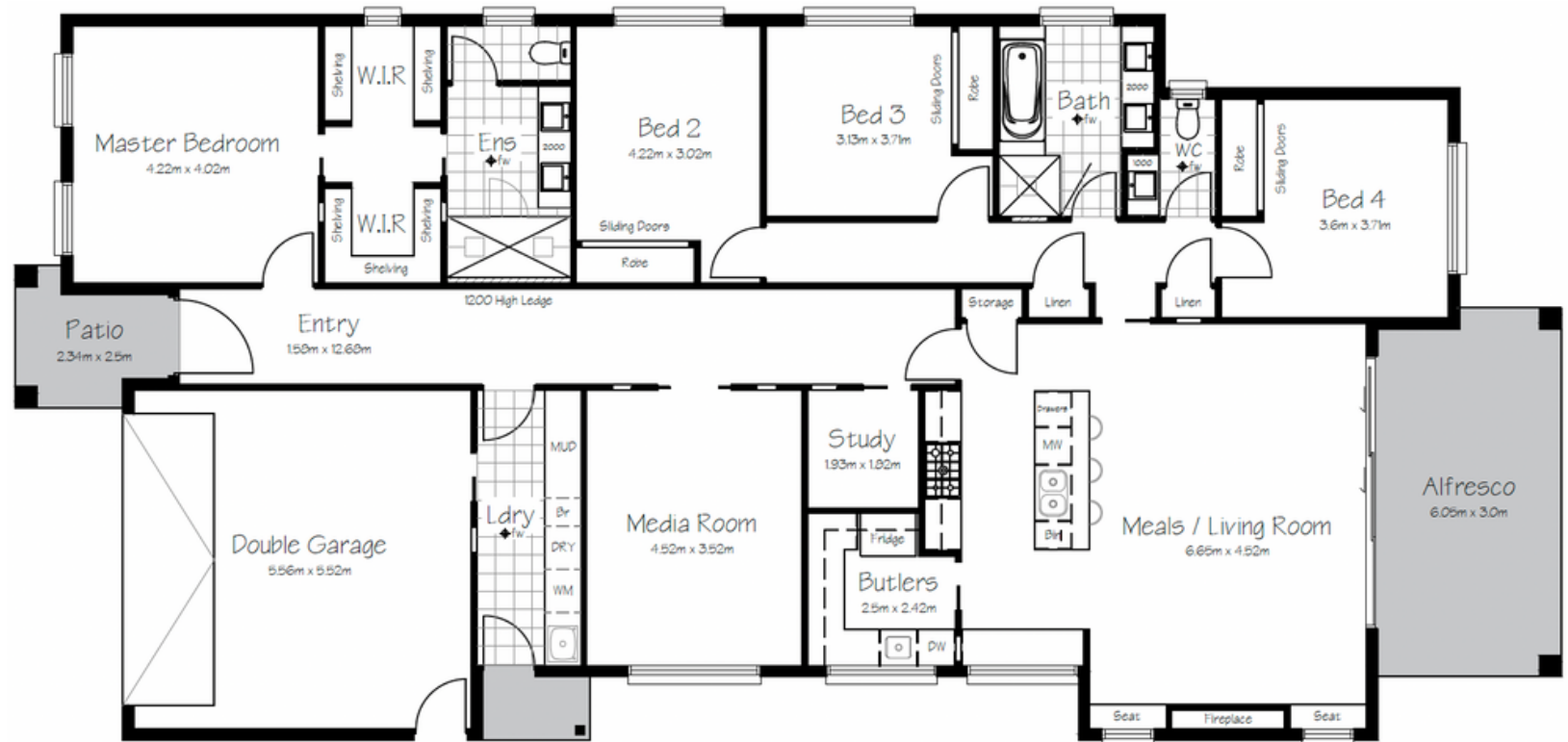
House length - 25.25m
 House width - 11.9m
 Dwelling - 205.4sqm
 Garage - 33.0 sqm
 Alfresco - 17.7 sqm
 Patio - 4.7 sqm
 Side Patio - 1.8 sqm
 Total Build - 262.6 sqm

Final design details and sizing will be determined at final plan drawing stage and is subject to estate and builder requirements.

The Westhampton

The Westhampton is a spacious home, typical of the Hamptons style. With plenty of storage space, a convenient study area and sizeable master bedroom suite, the design also incorporates a separate media room. The combined mudroom and laundry is a practical place for all the messiness of daily life to be hidden away from the rest of the beautiful home. This design also offers a large butler's pantry, double vanities in both the ensuite and main bathroom as well as ample bench space in the kitchen. With generous living areas, shaker-style cabinetry and a cosy fireplace, this home oozes Hamptons luxury and is perfect for entertaining.

Optional upgrades are available (please refer to the Inclusions & Upgrades flyer).



All Content Copyrighted.

This design and/or print is the property of Carnelian Projects and Carnelian Homes by Kerri-Ann and is protected by the Commonwealth Copyright Act 1968. It must not be used or reproduced in whole or in part without written permission. Any attempt to copy, use or reproduce the same, in whole or in part, will result in legal proceedings.

carnelianprojects.com.au